

JOB DATA

ULTIMATE DESIGN WIND SPEED : 160
 NOMINAL DESIGN WIND SPEED : 124
 RISK CATEGORY : 2
 IMPORTANCE FACTOR : 1.0
 BUILDING OCCUPANCY CLASSIFICATION : RESIDENTIAL
 BUILDING CONSTRUCTION TYPE : 5B
 EXPOSURE CATEGORY : B
 OPENING PROTECTION :
 INTERNAL PRESSURE COEFFICIENTS : +0.18, -0.18 (ENCLOSED)

FLOOR LIVE LOAD : 1/360 LIVE, 1/240 DEAD
 ROOF LIVE LOAD : 1/360 LIVE, 1/240 DEAD
 (SUPPORTING PLASTER CEILING)

THE STRUCTURAL COMPONENTS ON THIS PLANS ARE IN COMPLIANCE WITH THE 6TH EDITION FLORIDA BUILDING CODE, WIND LOAD COMPLIANCE AND ITS RESISTANCE TO GRAVITY AND DESIGN PRESSURES GENERATED BY A WIND VELOCITY OF 170 MPH

WIND VELOCITY (MPH)	160
IMPORTANCE FACTOR	1.00
EXPOSURE CATEGORY	B
INTERNAL PRESSURE COEFFICIENT	(+, -) 0.18
MEAN ROOF HEIGHT (FT)	14'-5"
BUILDING WIDTH (FT)	49'-10"
BUILDING LENGTH (FT)	54'-8"
ROOF SLOPE	5:12
ENCLOSED STRUCTURE	

AREA SUMMARY

COVERED LANAI	128 SF
ENTRY	70 SF
GARAGE	433 SF
TOTAL A/C LIVING AREA	1747 SF
TOTAL UNDER ROOF	2378 SF

NOTE A:
TABLE 722.3.2
MINIMUM EQUIVALENT THICKNESS (in)
OF BEARING OR NONBEARING CONCRETE MASONRY WALLS: 2.8
TYPE OF AGGREGATE: CALCAREOUS OR SILICEOUS GRAVEL
FIRE-RESISTANCE RATING (hours): 1

DOOR SCHEDULE

Type Mark	Model	Width	Height	Type Comments	Max. Positive Pressure	Max. Negative Pressure
1	FRENCH DOOR	5' - 4"	8' - 0"	EXTERIOR		
2	SLIDING DOOR	8' - 0"	8' - 0"	EXTERIOR		
3	GARAGE	16' - 0"	8' - 0"	EXTERIOR		
4	SWING	3' - 0"	8' - 0"	EXTERIOR		

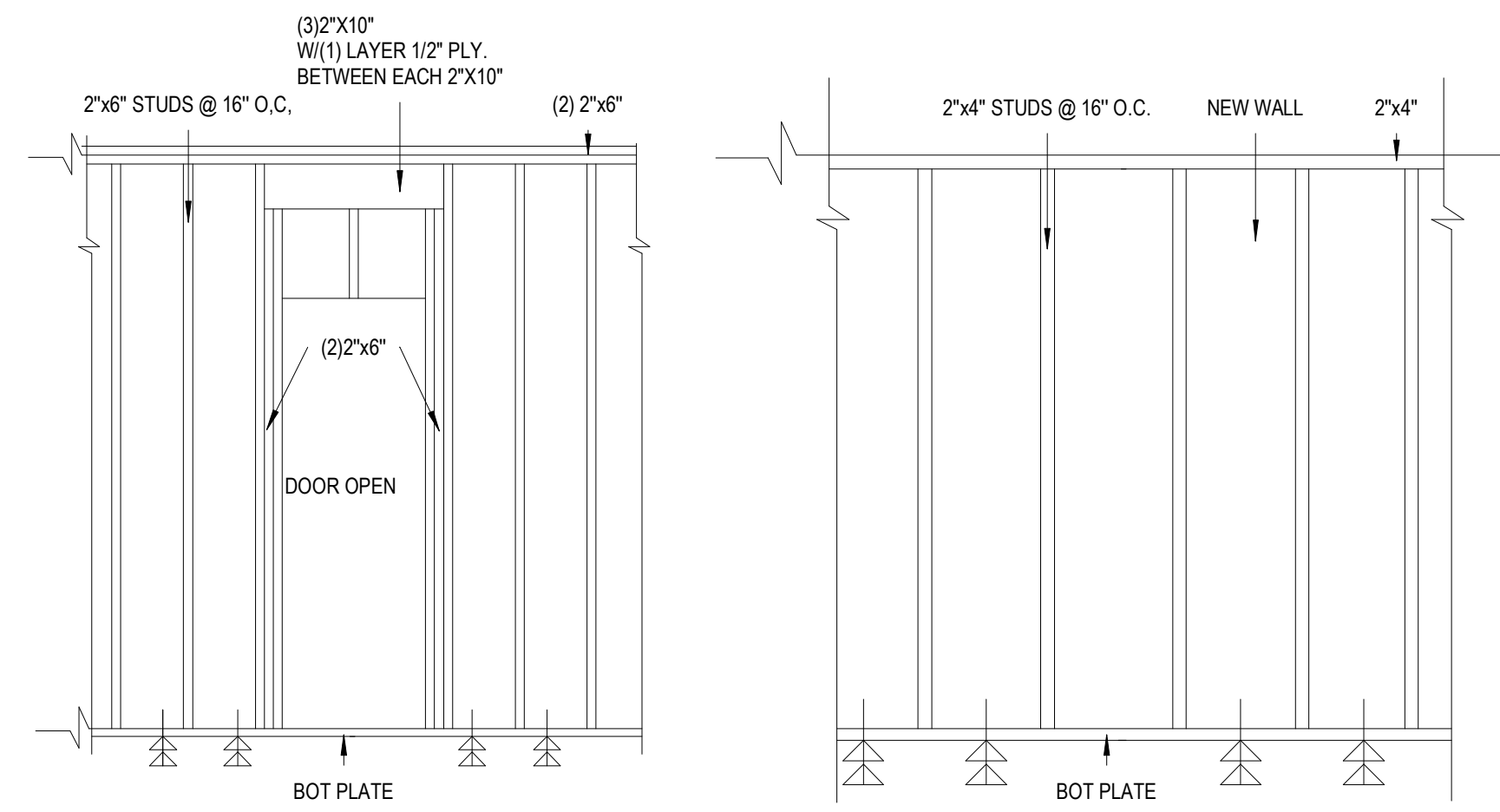
INTERIOR DOOR SCHEDULE

Type Mark	Model	Width	Height	Type Comments	Count
(2) F-2668	BI-FOLD	5' - 0"	6' - 8"	INTERIOR	2
(2) F-3068	BI-FOLD	6' - 0"	6' - 8"	INTERIOR	2
2668	SWING	2' - 6"	6' - 8"	INTERIOR	4
2868	SWING	2' - 8"	6' - 8"	INTERIOR	2
3068	SWING	3' - 0"	6' - 8"	INTERIOR	1
F-2468	BI-FOLD	2' - 4"	6' - 8"	INTERIOR	1
P-2668	POCKET	2' - 8"	6' - 8"	INTERIOR	1

WINDOW SCHEDULE

Type Mark	Width	Height	Description	Comments	Count	Max. Positive Pressure	Max. Negative Pressure
25	3' - 0"	5' - 2"	SINGLE HUNG		4		
78	2' - 2"	2' - 2"	SINGLE HUNG		1		
79	3' - 0"	3' - 0"	SINGLE HUNG		1		

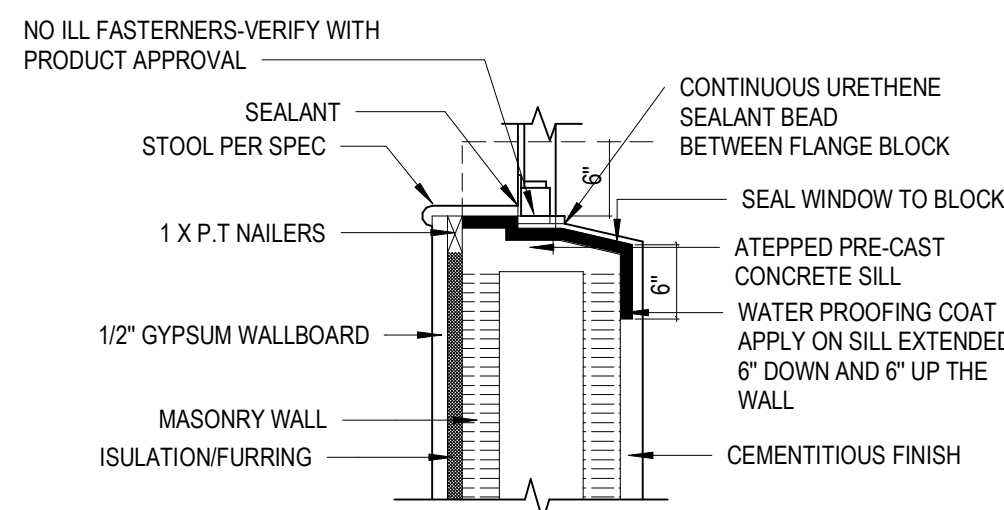
NOTE: CONTRACTOR TO VERIFY WINDOWS AND DOORS ROUGH OPENINGS AS PER THE MANUFACTURER SPECIFICATIONS.



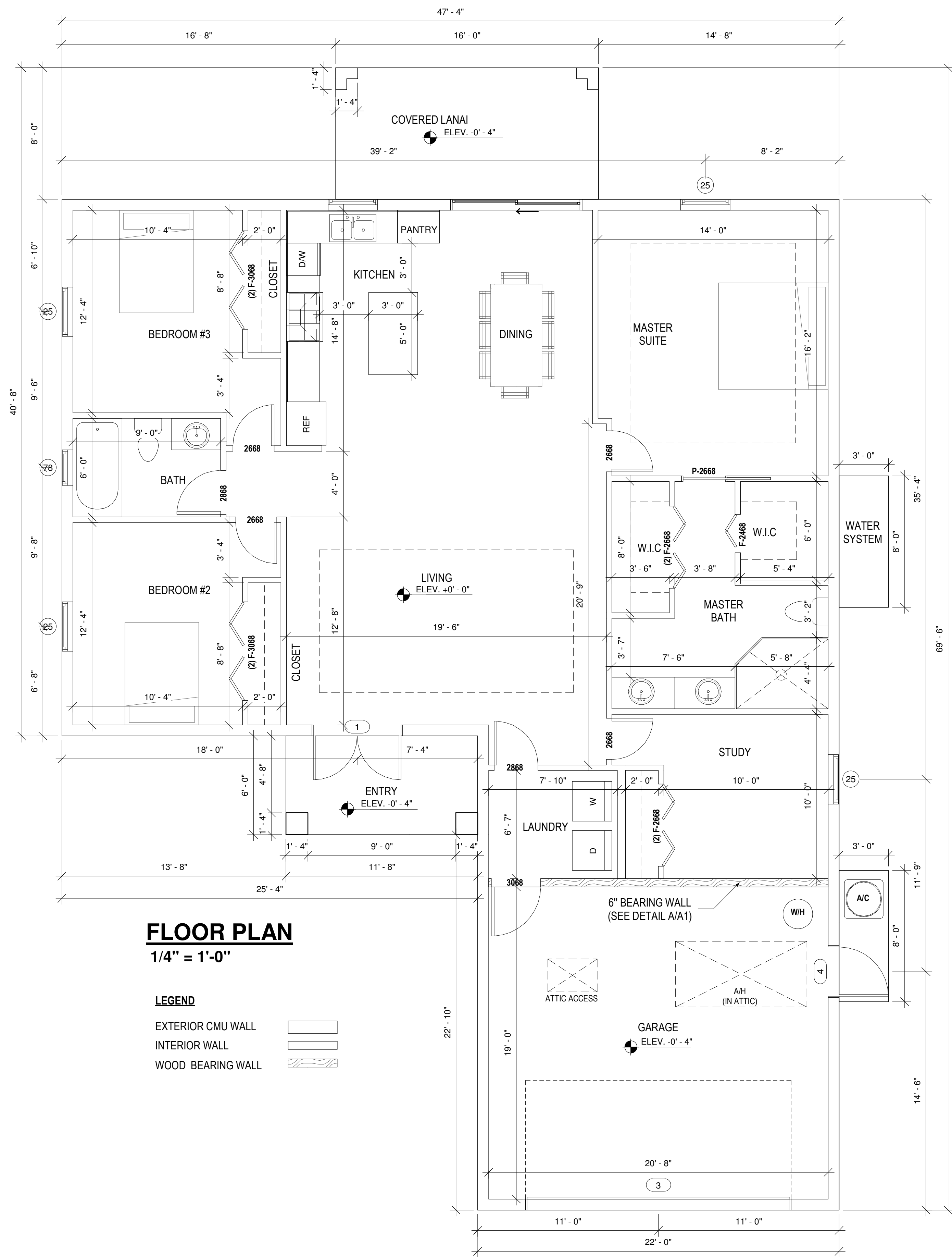
TYP. DETAIL BEARING WALL
N.T.S

TYP. DETAIL NEW NON BEARING WALL
N.T.S

DETAIL A
N.T.S



SH WINDOW SILL-CMU
N.T.S



FLOOR PLAN
1/4" = 1'-0"

LEGEND

- EXTERIOR CMU WALL
- INTERIOR WALL
- WOOD BEARING WALL



ANY QUESTIONS REGARDING THE DRAWINGS, DESIGNS AND INFORMATION REPRESENTED HEREIN PLEASE CONTACT:

OLYMPUS DESIGNS GROUP

5621 STRAND BLVD, SUITE 308
 NAPLES, FL 34110
 239 306-2324
 info@olympusdesigns.net

REVISIONS

No.	Description	Date

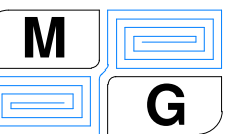
APPLICABLE CODES

-6TH EDITION (2017) FLORIDA BUILDING CODE
 -6TH EDITION (2017) FLORIDA EXISTING CODE
 -2014 STANDARD NATIONAL ELECTRICAL CODE

DIGITAL SEAL

THIS DESIGN HAS BEEN PREPARED UNDER SUPERVISION, DIRECTION AND CONTROL OF:

MG Engineering Consulting Services, Inc.
 3640 19th Ave SW
 Naples, FL 34117
 Phone: (239) 595 5465
 maxguerra@mg-engineering.us



YABEYRE SERVICES INC
 816 BELL BLVD S. - 10424602

FLOOR PLAN

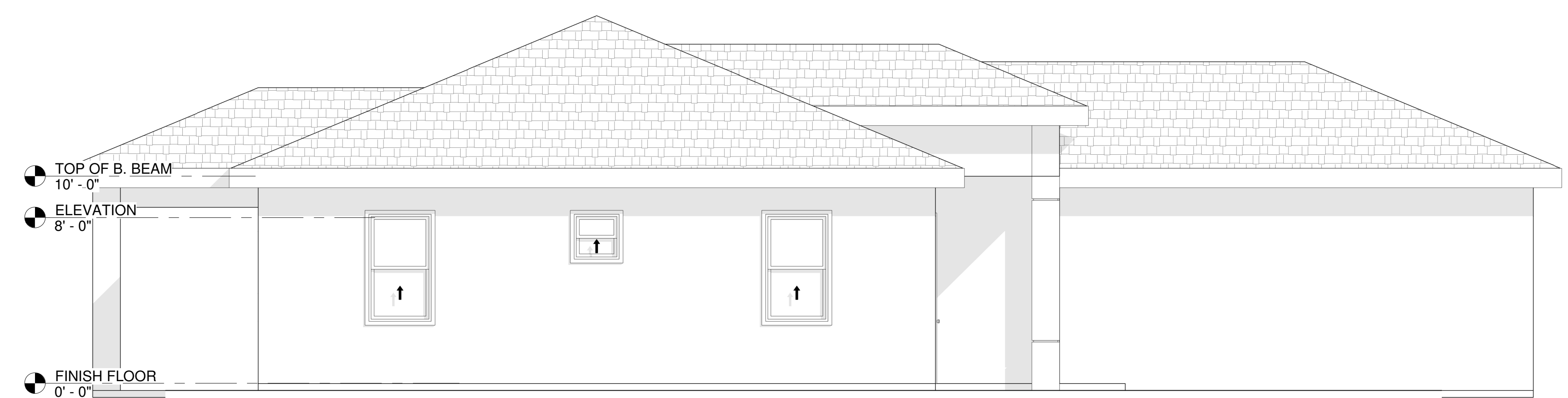
Project Number	
Date	12/20
Drawn by	JG
Notes	DS

A1

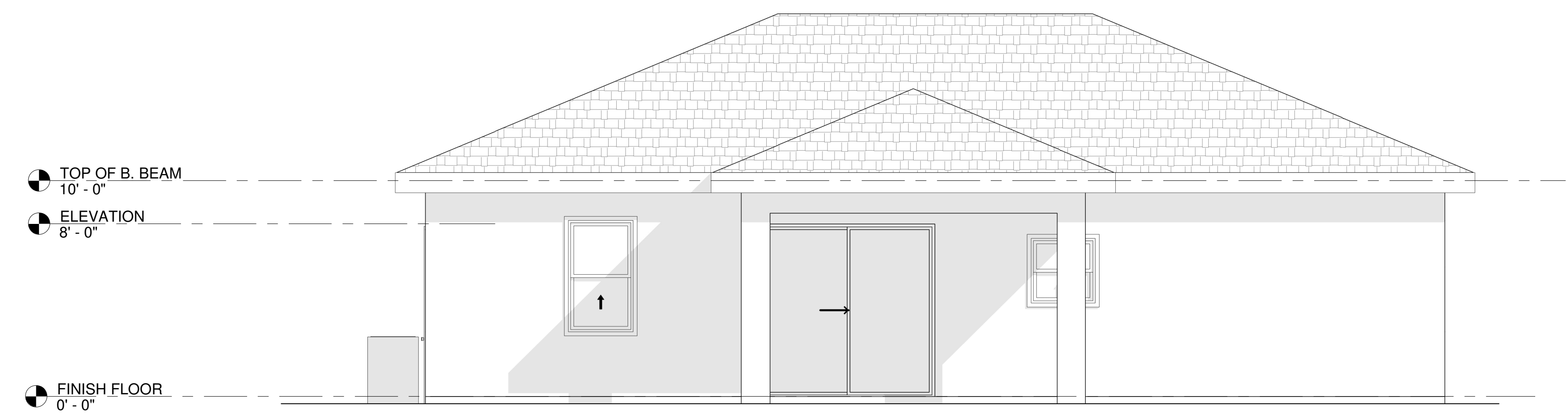
Scale As indicated



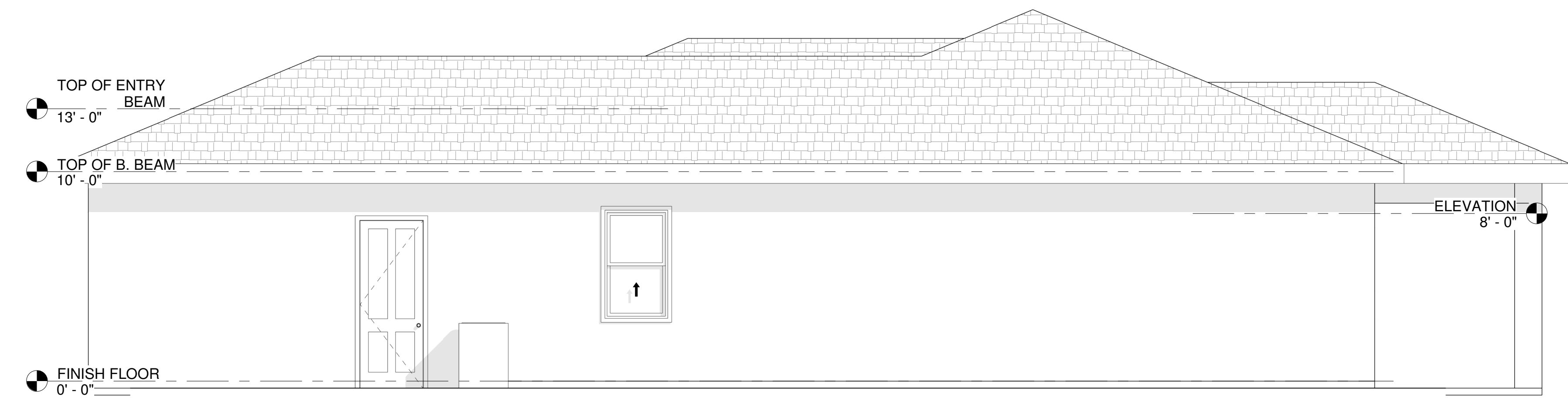
FRONT ELEVATION
1/4" = 1'-0"



RIGHT ELEVATION
1/4" = 1'-0"



REAR ELEVATION
1/4" = 1'-0"



LEFT ELEVATION
1/4" = 1'-0"



ANY QUESTIONS REGARDING THE DRAWINGS, DESIGNS AND INFORMATION REPRESENTED HEREIN PLEASE CONTACT:

OLYMPUS DESIGNS GROUP
5621 STRAND BLVD, SUITE 308
NAPLES, FL 34110
239 306-2324
info@olympusdesigns.net

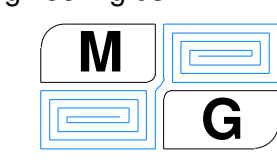
REVISIONS

No.	Description	Date

APPLICABLE CODES
-6TH EDITION (2017) FLORIDA BUILDING CODE
-6TH EDITION (2017) FLORIDA EXISTING CODE
-2014 STANDARD NATIONAL ELECTRICAL CODE

DIGITAL SEAL

THIS DESIGN HAS BEEN PREPARED UNDER SUPERVISION, DIRECTION AND CONTROL OF:
MG Engineering Consulting Services, Inc.
3640 19th Ave SW
Naples, FL 34117
Phone: (239) 595 5465
maxguerra@mg-engineering.us



YABEYRE SERVICES INC
816 BELL BLVD S. - 10424602

ELEVATIONS

Project Number	
Date	12/20
Drawn by	JG
Notes	DS

A3

Scale 1/4" = 1'-0"